

Oct. 27, 1936.

A. EINSTEIN

Des. 101,756

BLOUSE

Filed July 2, 1936

Fig. 3.

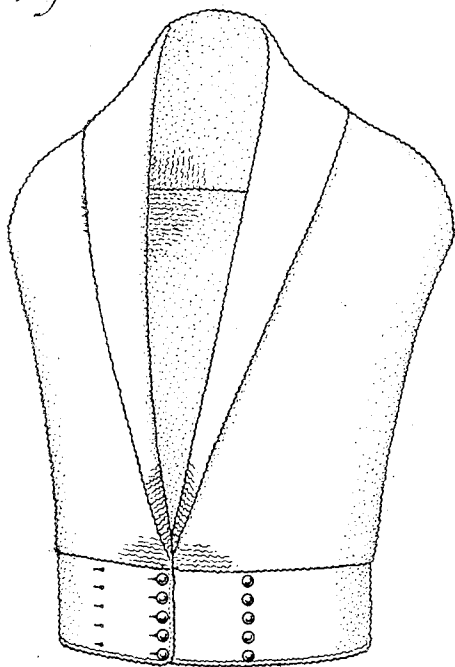


Fig. 2.

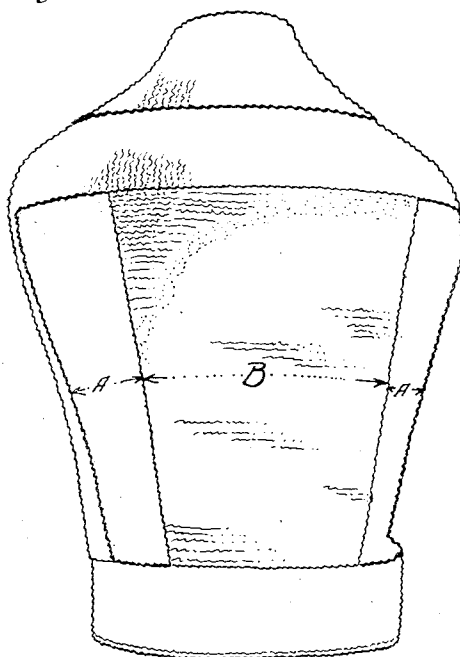
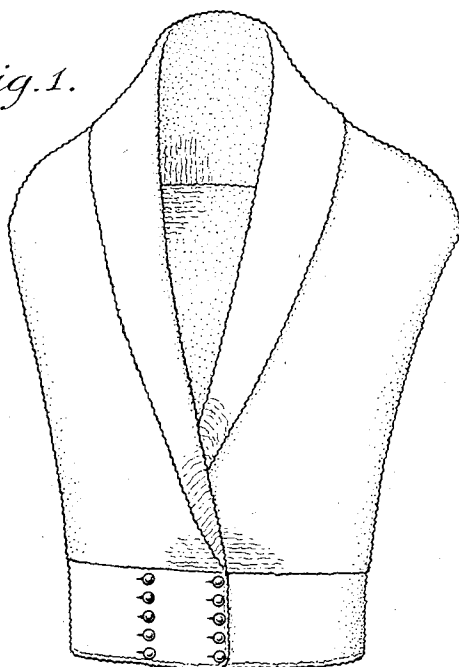


Fig. 1.



INVENTOR.
Albert Einstein
Charles A. Morton
ATTORNEY.

Patented Oct. 27, 1936

Des. 101,756

UNITED STATES PATENT OFFICE

101,756

DESIGN FOR A BLOUSE

Albert Einstein, New York, N. Y.

Application July 2, 1936, Serial No. 63,612

Term of patent $3\frac{1}{2}$ years

To all whom it may concern:

Be it known that I, Albert Einstein, a citizen of the German Republic, residing in the Borough of Manhattan, county of New York, and State of New York, have invented a new, original, and ornamental Design for a Blouse, of which the following is a specification, reference being had to the accompanying drawing, forming part thereof.

Fig. 1 is a front perspective view of said garment showing my said design;

Fig. 2 is a rear perspective view of the same; and

Fig. 3 is a front view of a modified method of buttoning.

The design is characterized by the side openings A—A (Fig. 2) which also serve as arm holes; a central back panel extends from the yoke to the waistband as indicated at B.

I claim:

The ornamental design for a blouse as shown and described.

ALBERT EINSTEIN.